



SAFIT Srl

Via Casonetto,17
36050 Friola (VI)
-- ITALY --
Tel.0444 668335

**Technical Data Sheet
Steel toe cap**

Tabella Dimensionale

Puntali Acciaio

Type

Modello

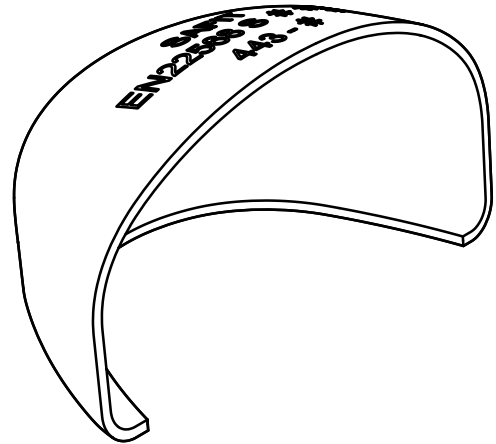
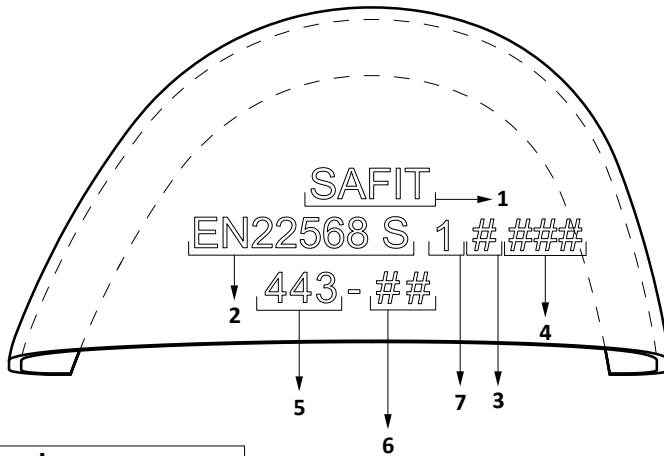
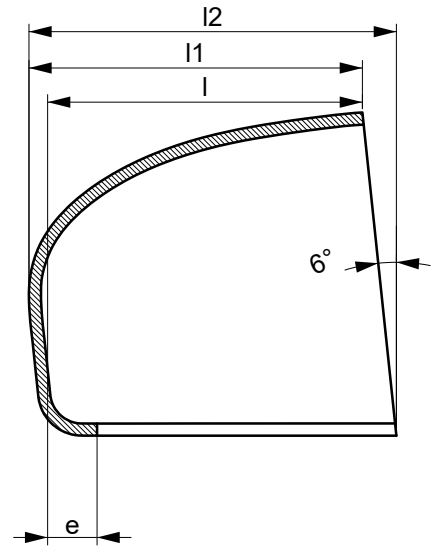
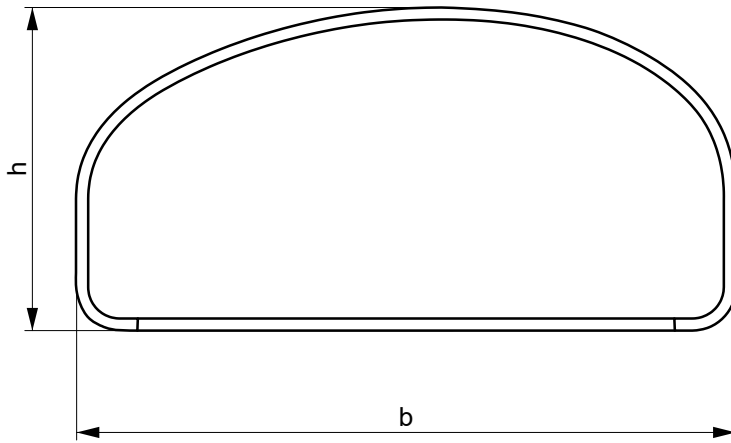
443

MADE IN ITALY

Written by: Nikola Kostic

Date: 07/01/2023

Rev.02



1	producer name
2	normative ref.
3	type A or B
4	batch number
5	model
6	size/R or L
7	metallic toe caps ref.

average hardness of steel releaved
on the top of the toe in the center position : HRc = 48 ± 2

dimension unit:		millimeter											KG
Tolerance:		±0,05	±0,7	±0,5	±1	±1	±1	-2/ +2	Minimal requirement of		Average performance		± 0,010
Size #	strip lenght - code ref.:	raw material thickness	b	h	l1	l2	l	e	ISO EN 22568:1 A	ISO EN 22568:1 B	200J	15KN	Weight (1 pairs)
4													
5	GAA-2	1,8	80,5	38,9	39,2	42,5	37,4	8,0	19,5	23,5	23,0	30,0	0,186
6	GAA-2	1,6	81,2	40,2	43,8	45,5	38,2	8,0	20,0	24,0	22,5	31,0	0,160
7	GAA-4	1,6	83,0	40,5	45,8	47,4	40,7	8,0	20,5	24,5	23,0	31,5	0,168
8	GAA-4	1,6	84,5	41,8	46,3	48,0	40,9	8,0	21,0	25,0	23,5	31,5	0,175
9	GAA-5	1,6	87,9	43,0	48,0	50,3	42,5	8,0	21,5	25,5	24,5	32,0	0,186
10	GAA-5	1,5	89,7	49,0	51,0	48,5	43,5	8,0	22,0	26,0	23,8	33,0	0,189
11	GAA-6	1,5	92,0	50,2	51,6	50,5	44,8	8,0	22,0	26,0	24,5	33,0	0,198
12													

Conformity to the norm
Conforme alle norme

ISO EN 22568:1 A

ISO EN 22568:1 B

ANSI/ASTM

CSA