



SAFIT Srl

Via Casonetto,17
36050 Friola (VI)
-- ITALY --
Tel.0444 668335

**Technical Data Sheet
Steel toe cap**

Tabella Dimensionale

Puntali Acciaio

Type

Modello

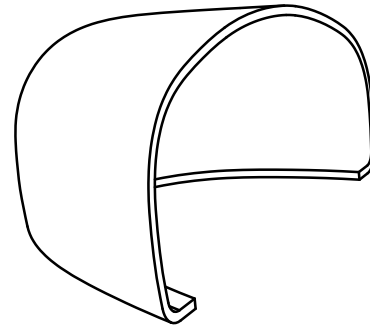
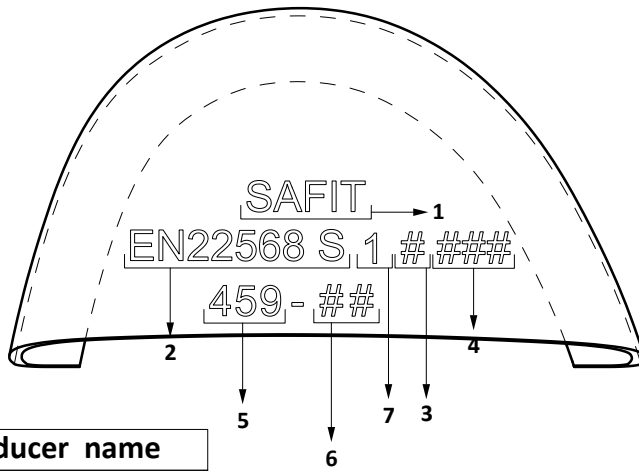
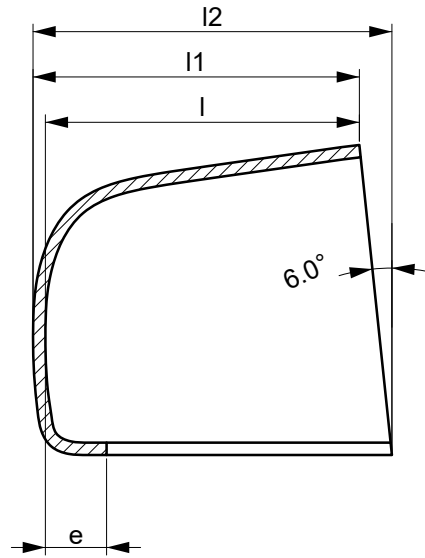
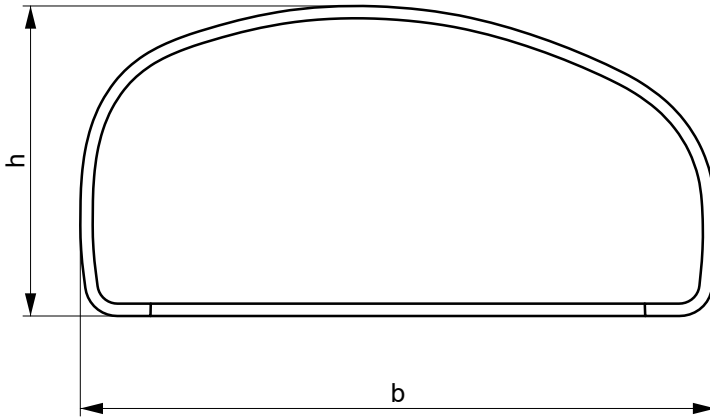
459

MADE IN ITALY

Written by: Nikola Kostic

Date: 07/01/2023

Rev.02



1	producer name
2	normative ref.
3	type A or B
4	batch number
5	model
6	size/R or L
7	metallic toe caps ref.

average hardness of steel releaved
on the top of the toe in the center position : HRc = 48 ± 2

dimension unit:		millimeter										KG	
Tolerance:		±0,05	±0,7	±0,5	±1	±1	±1	-2/ +2	Minimal requirement of		Average performance		± 0,010
Size #	strip lenght - code ref.:	raw material thickness	b	h	l1	l2	l	e	ISO EN 22568:1 A	ISO EN 22568:1 B	200J	15KN	Weight (1 pairs)
4													
5													
6	GAA-2	1,6	79,2	37,2	40,1	43,6	38,5	8,0	20,0	24,0	23,0	32,5	0,164
7	GAA-3	1,6	80,6	40,2	41,0	44,7	39,4	8,0	20,5	24,5	24,0	33,5	0,152
8	GAA-4	1,6	84,0	41,0	43,0	47,0	41,4	8,0	21,0	25,0	25,0	32,5	0,172
9	GAA-4	1,5	84,8	41,0	44,6	48,0	43,1	8,0	21,5	25,5	26,0	35,0	0,170
10	GAA-5	1,5	89,5	42,0	46,0	50,0	44,5	8,0	22,0	26,0	26,5	35,5	0,174
11	GAA-6	1,5	92,0	43,0	48,0	52,0	46,5	8,0	22,0	26,0	27,0	36,0	0,196
12													

Conformity to the norm
Conforme alle norme

ISO EN 22568:1 A

ISO EN 22568:1 B

ANSI/ASTM

CSA