



SAFiT Srl

Via Casonetto,17
36050 Friola (VI)
-- ITALY --
Tel.0444 668335

**Technical Data Sheet
Steel toe cap**

Tabella Dimensionale

Puntali Acciaio

Type

Modello

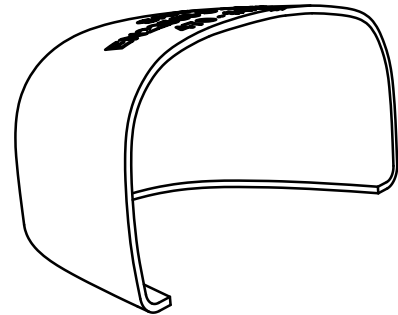
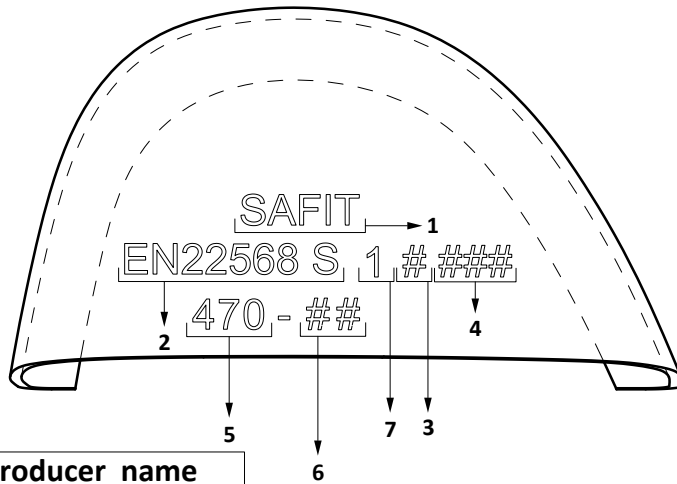
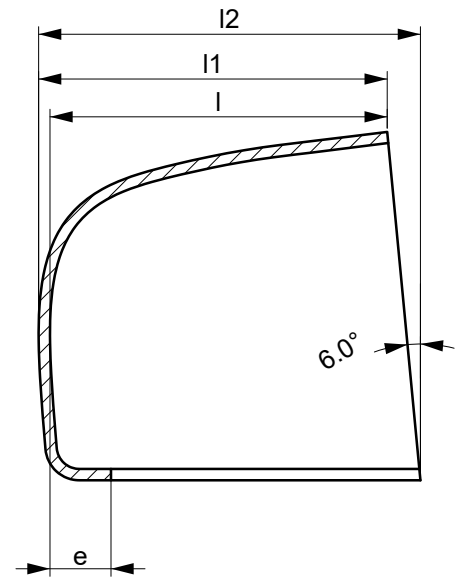
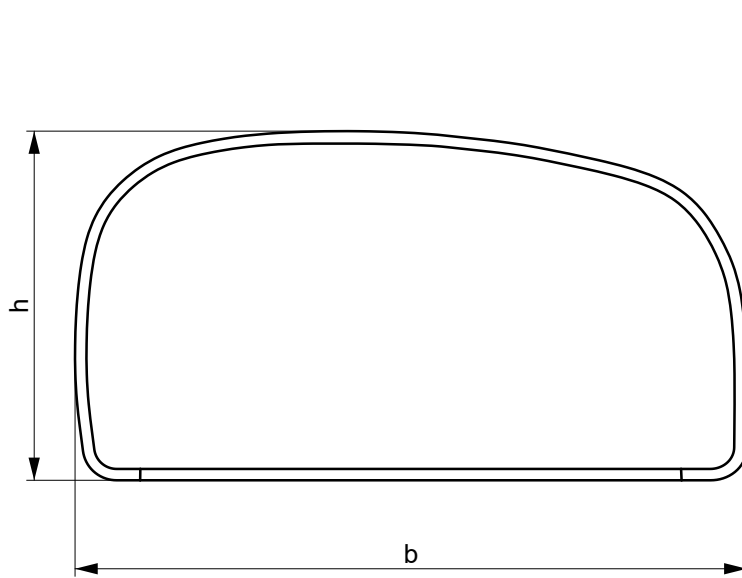
470

MADE IN ITALY

Written by: Nikola Kostic

Date: 07/01/2023

Rev.02



1	producer name
2	normative ref.
3	type A or B
4	batch number
5	model
6	size/ R or L
7	metallic toe caps ref.

average hardness of steel revealed
on the top of the toe in the center position : HRc = 48 ± 2

dimension unit:		millimeter											KG
Tolerance:		±0,05	±0,7	±0,5	±1	±1	±1	-2/+2	Minimal requirement of		Average performance		± 0,010
Size #	strip lenght - code ref.:	raw material thickness	b	h	l1	l2	l	e	ISO EN 22568:1 A	ISO EN 22568:1 B	200J	15KN	Weight (1 pairs)
4													
5													
6	GAA-3	1,6	77,9	39,9	44,3	53,8	42,7	8,0	20,0	24,0	23,5	31,5	0,152
7	GAA-4	1,6	81,2	41,9	43,5	47,3	41,9	8,0	20,5	24,5	25,0	33,0	0,164
8	GAA-5	1,6	86,0	41,5	46,5	49,5	44,9	8,0	21,0	25,0	25,0	33,5	0,182
9	GAA-5	1,5	86,0	44,4	44,9	48,8	43,4	8,0	21,5	25,5	26,0	34,0	0,190
10	GAA-6	1,5	88,1	44,5	46,3	50,5	44,8	8,0	22,0	26,0	26,5	34,5	0,192
11	GAA-6	1,5	92,4	47,7	47,3	52,9	45,8	8,0	22,0	26,0	27,0	36,0	0,227
12													

Conformity to the norm
Conforme alle norme

ISO EN 22568:1 A

ISO EN 22568:1 B

ANSI/ASTM

CSA